

RTK Solution

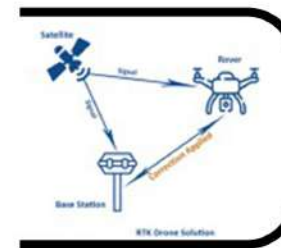
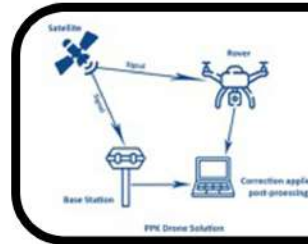
Customization

Apogee GNSS also provides customized PPK & RTK Drone solutions. We can customize the solution based on the requirements in different 2 industries such as railway, crop spraying, aerial photography and videography, surveying and mapping, disaster relief, mining, aviation, etc.



PPK DRONE:

PPK (Post Processing Kinematics) is a GPS correction technology that corrects location data after it is collected and uploaded.



RTK DRONE:

RTK (Real Time Kinematics) RTK Technology provides real-time corrections to location data when the survey drone is taking images of the site.

Survey the site

The RTK drone with a GNSS receiver gathers data from the satellites and base station to give accurate positioning data in real time.



Specifications

Mechanical	Dimensions: 56.4 * 45.3 * 14.6 mm , Weight: 58 G
Positioning PPK Accuracy	Horizontal – 5mm + 1ppm , Vertical – 10mm + 1 ppm
RTK Accuracy	Horizontal – 10mm + 1ppm , Vertical – 20mm + 1 ppm
Connectivity	TF card Led – Power, Logging Antenna Mcx Storage – USB Mass Storage In-built SD Card
Data	Position Output – NMEA Data Logging – RINEX with events Update rates – 1 to 10 Hz Internal Storage – 16 GB
GNSS	Signal – GPS/ QZSS L1/L2 GLONASS G1 Beidou B1, B2 Galileo E1, E5 SBAS Number of Channels - 184

Result

- By using RTK drone solution, you will get accurate results in real time.



Apogee GNSS Pvt. Ltd.

Web - www.apogeeGNSS.com

No - 7624002254

Email - sales@apogeeGNSS.com

Add - A-67, Sector 63, Noida, UP



UAV Solution



GNSS Module



Helix Antenna



GNSS Receiver

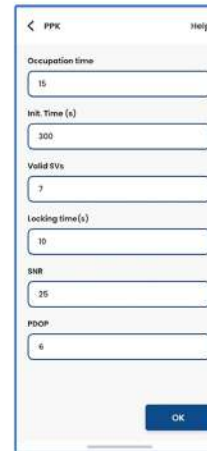
PPK Drone Solution *Survey the site*

STEP 1

Apogee GNSS provides a customize app, GeoMaster, to configure the device in PPK mode.

Firstly, run the app to collect ground survey points.

Record the required data and process it in iMapper software.



• In the field :



• Outside the survey site :

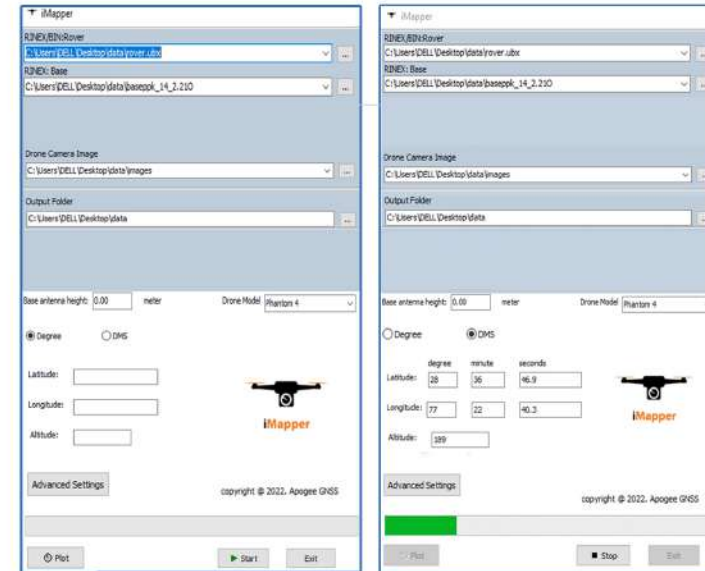


In PPK Drone Solution both rover and base record data and process it later with iMapper software to receive accurate positioning data.

STEP 2

■ Upload the data into the software

Drop your flight data into our iMapper software



FEATURES

- An affordable solution that provides centimeter accuracy within 2-3 cm.
- In-built SD card memory storage.
- Integrated PPP Global Satellite Corrections data
- 3D IMU offset correction.
- Smart Geotagging.
- Geoid and coordinate System Support.
- Integrated PPP Global Satellite Corrections data
- Integrated PPK base station data.
- Without ground image control points, even complex terrain image control points can be reduced by more than 80%.

STEP 3

■ Result

After processing the data into the software, the result would be

- Metashape
- PIX4D
- UpdateTags
- rover_081138.pos
- rover_081138.pos.stat
- rover_081138_events.pos

Fly path of the survey site

